



ROYAL
WESTMORELAND
— BARBADOS —

ROYAL

APARTMENTS

royalwestmoreland.com

Royal Apartments

Elegantly appointed apartments looking out over the stunning Bajan landscape.

The Royal Apartments are the most distinctive addition to the prestigious Royal Westmoreland estate, offering a choice of one, two or three-bedroom residences, luxury penthouses and stunning ground-floor garden apartments.

Boasting panoramic views of immaculate gardens or the azure Caribbean Sea, the Royal Apartments feature colonial architectural designs, spacious covered terraces and a large communal pool.

Ranging in size from 830 sq. ft. for a one bedroom to 2,000 sq. ft. for a three bedroom, the Royal Apartments are designed and furnished to the most exacting of standards.



Key features

1/2/3



BEDROOMS

12



SEA OR GARDEN VIEWS

1



COMMUNAL
SWIMMING POOL

Royal Apartments

Apartment Floor Plan

One bedroom apartment

830 sq ft

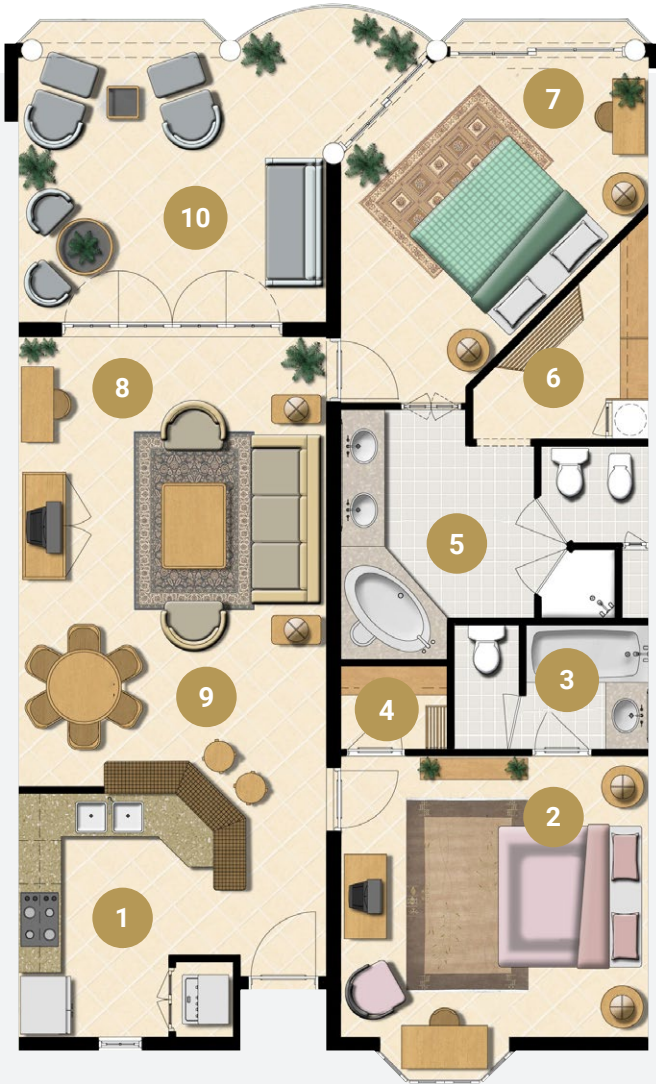


Key features

- 1. Bedroom one
- 2. Store
- 3. Bathroom
- 4. Kitchen
- 5. Living space
- 6. Covered terrace

Two bedroom apartment

1,440 sq ft

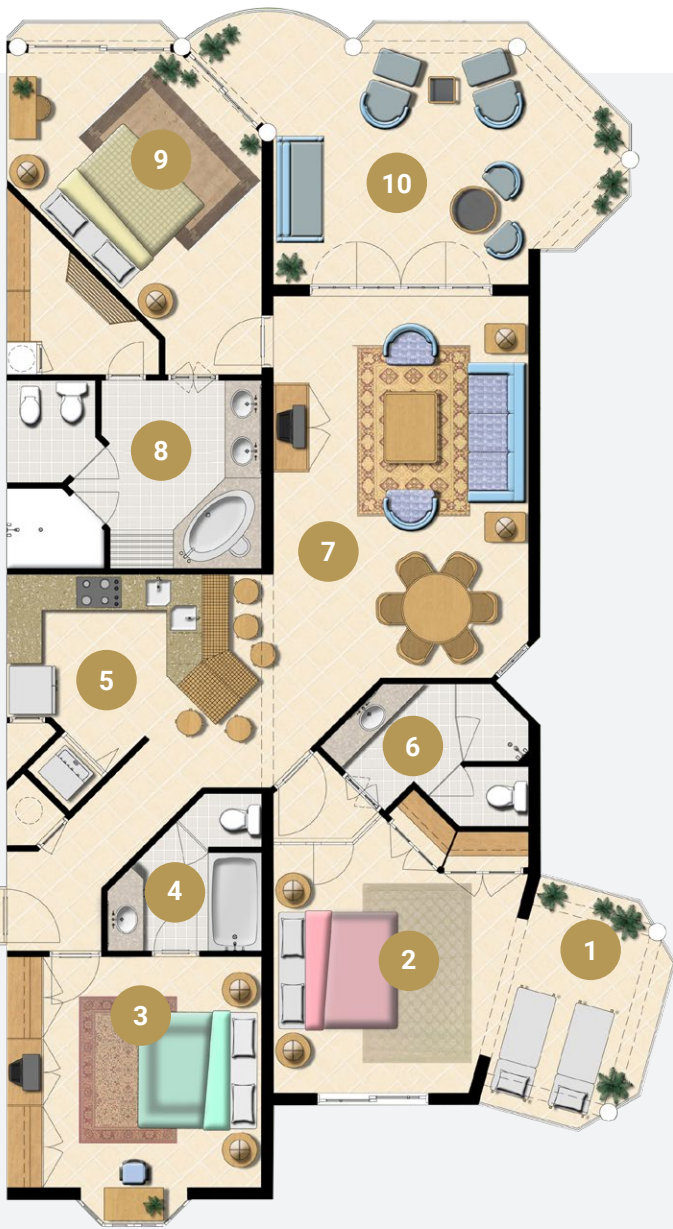


Key features

- 1. Kitchen
- 2. Bedroom one
- 3. Bathroom one
- 4. Cupboard
- 5. Bathroom two
- 6. Walk in closet
- 7. Bedroom two
- 8. Living space
- 9. Dining
- 10. Covered terrace

Three bedroom apartment

2,000 sq ft



Key features

- 1. Covered terrace
- 2. Bedroom one
- 3. Bedroom two
- 4. Bathroom two
- 5. Kitchen
- 6. Bathroom one
- 7. Living/dining area
- 8. Bathroom three
- 9. Master bedroom
- 10. Covered terrace

“Every property comes with the undisputed cachet of a Royal Westmoreland address”



Royal Apartments Development Map





To find out more please contact property sales
Royal Westmoreland, St James, Barbados, W.I

Barbados +1 (246) 419 0394 **UK** +44 (0) 1524 782 649

royalwestmoreland.com